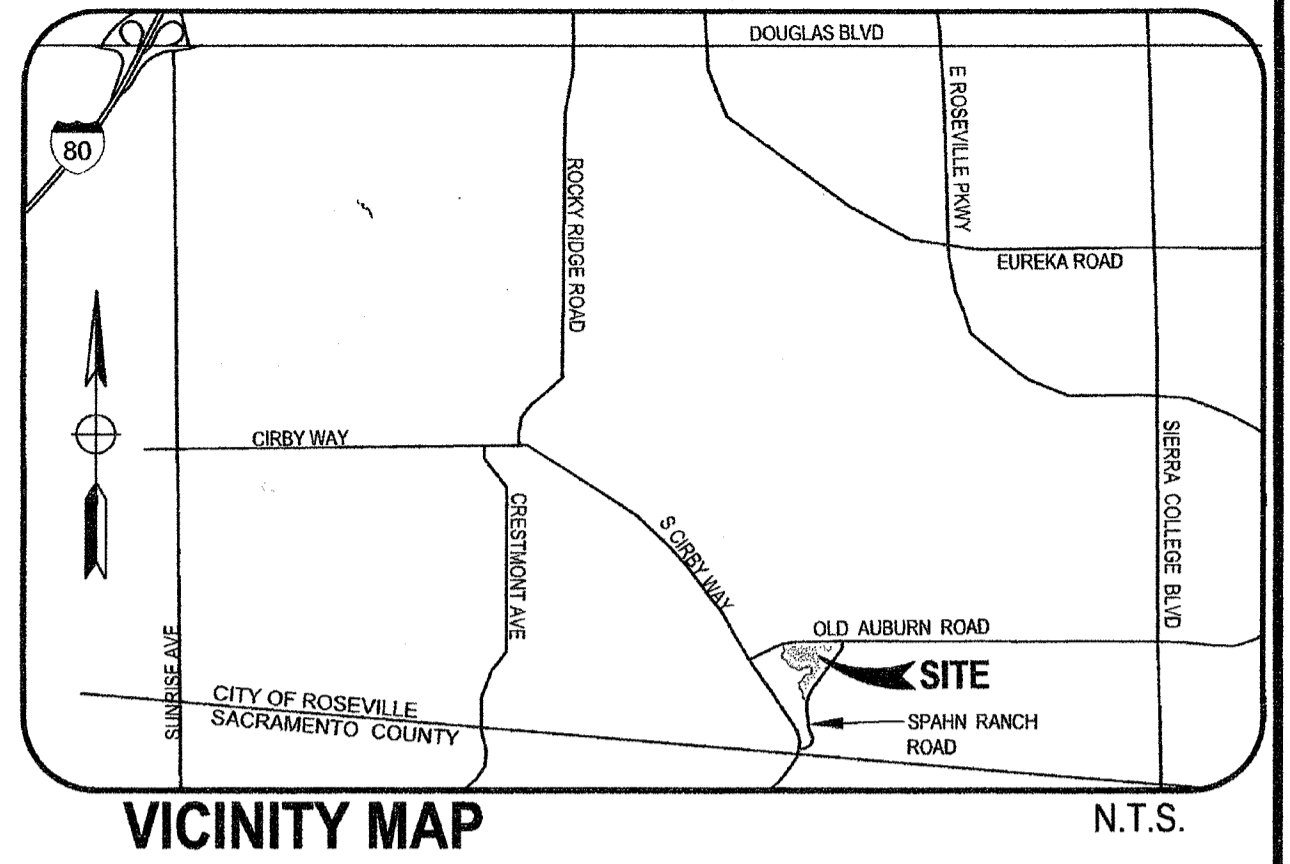


**BOUNDARY MAP
ANNEXATION MAP NO. 5 OF
COMMUNITY FACILITIES DISTRICT NO. 4
(PUBLIC SERVICES) OF THE CITY OF ROSEVILLE, COUNTY OF PLACER,
STATE OF CALIFORNIA - OLD AUBURN RANCH**

LEGEND
- - - - - BOUNDARY OF ANNEXATION



REFERENCE IS HEREBY MADE TO THAT CERTAIN MAP FILED ON MAY 22, 2008 IN BOOK 3 OF MAPS OF COMMUNITY FACILITIES DISTRICT AT PAGE 50-5, IN THE OFFICE OF THE PLACER COUNTY RECORDER, STATE OF CALIFORNIA, WHICH THIS ANNEXATION AFFECTS.

CITY CLERK'S MAP FILING STATEMENT

FILED IN THE OFFICE OF THE CITY CLERK OF THE CITY OF ROSEVILLE, PLACER COUNTY CALIFORNIA, ON THIS 15 DAY OF July, 2015.

Sonia Orozco
SONIA OROZCO, CITY CLERK

CITY CLERK'S MAP STATEMENT

I HEREBY CERTIFY THAT THE WITHIN MAP SHOWING PROPOSED BOUNDARIES OF ANNEXATION MAP #5 OF COMMUNITY FACILITIES DISTRICT NO. 4 (PUBLIC SERVICES) CITY ROSEVILLE, COUNTY OF PLACER, STATE OF CALIFORNIA - OLD AUBURN RANCH WAS APPROVED BY THE CITY COUNCIL OF THE CITY OF ROSEVILLE AT A REGULAR MEETING THEREOF, HELD ON THE 15 DAY OF July, 2015, BY ITS RESOLUTION NUMBER 15-322.

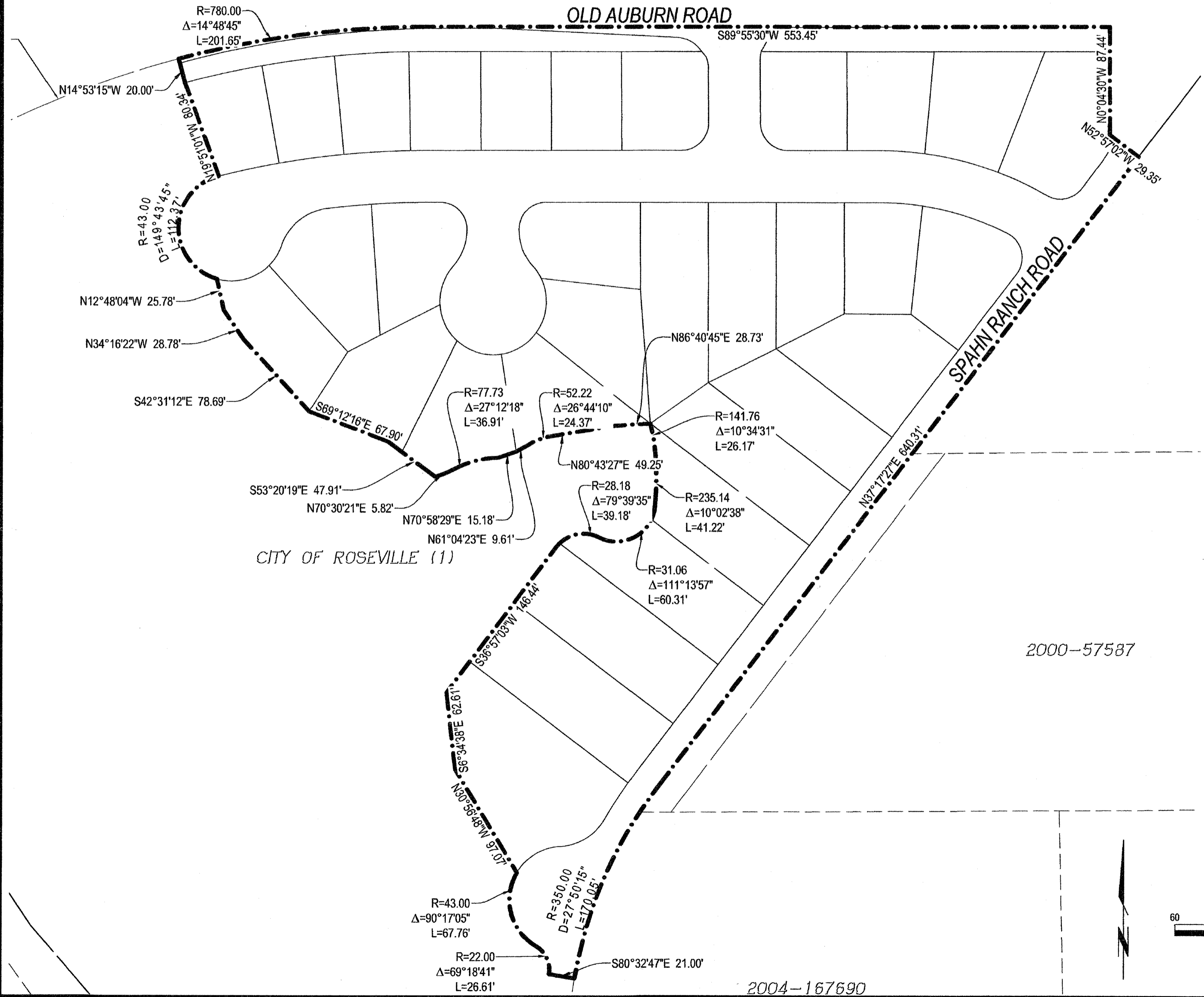
Sonia Orozco
SONIA OROZCO, CITY CLERK

RECORDER'S STATEMENT

FILED THIS 3rd DAY OF August, 2015 AT THE HOUR 10:05 O'CLOCK IN BOOK 3 OF MAPS ASSESSMENT AND COMMUNITY FACILITIES DISTRICTS AT PAGE 50-6 IN THE OFFICE OF THE COUNTY RECORDER IN THE COUNTY OF PLACER, STATE OF CALIFORNIA.

DOCUMENT NO. 2015-0067177
FEE: \$ 8.00

C. Costa, Deputy
JIM McCAULEY
COUNTY RECORDER
COUNTY OF PLACER



MORTON & PITALO, INC.
CIVIL ENGINEERING • LAND PLANNING • LAND SURVEYING
LANDSCAPE ARCHITECTURE • TRAFFIC ENGINEERING
75 Iron Point Circle, Suite 120 • Folsom, CA 95630
phone: 916.984.7621 • fax: 916.984.9617 • survey fax: 916.563.6770
survey email: staking@mpengr.com • web: www.mpengr.com

JUNE, 2015
Sheet 1 of 1